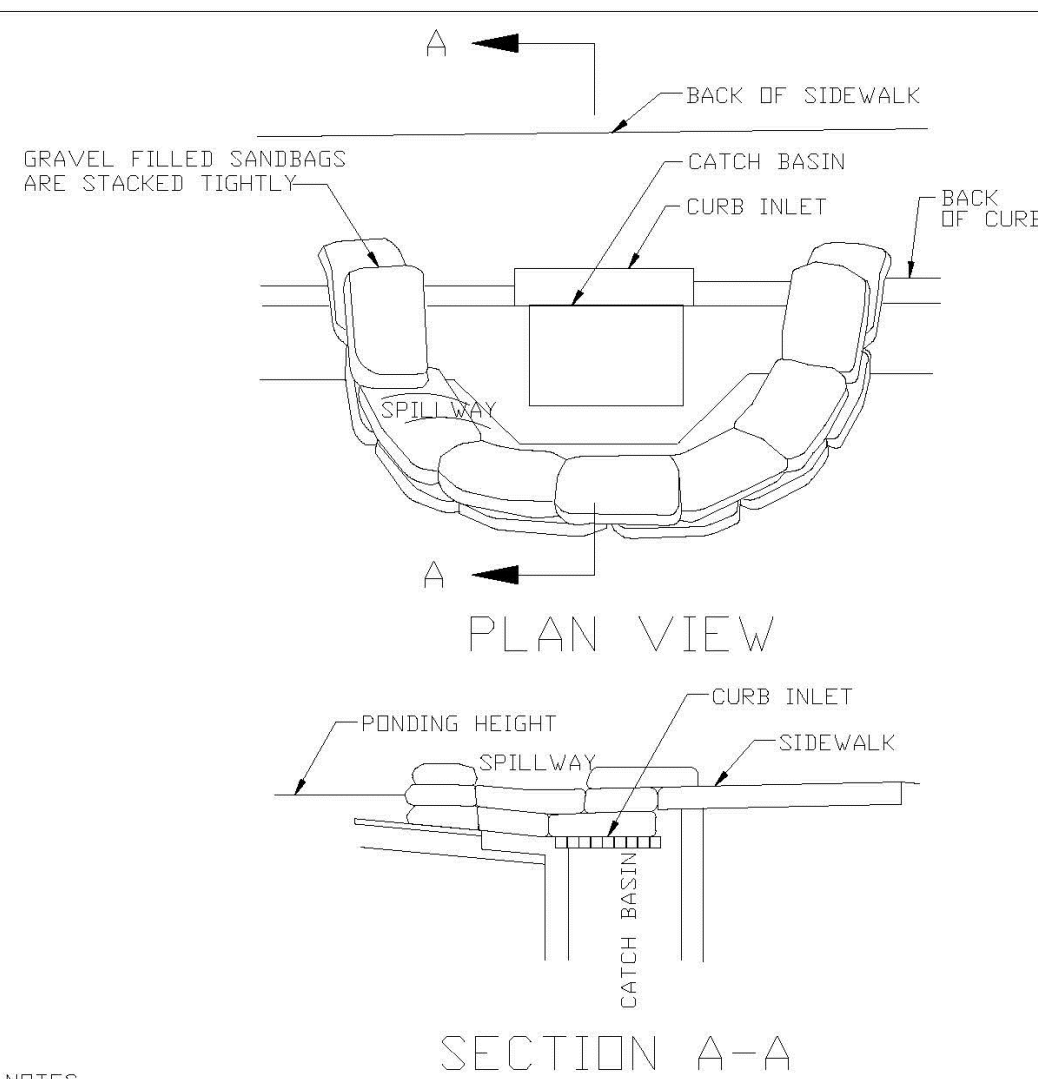


Teresa Villalon-Camacho, State of Florida, Professional Engineer,  
License No. 94893

This item has been digitally signed and sealed by Teresa Villalon-Camacho on the date indicated here.

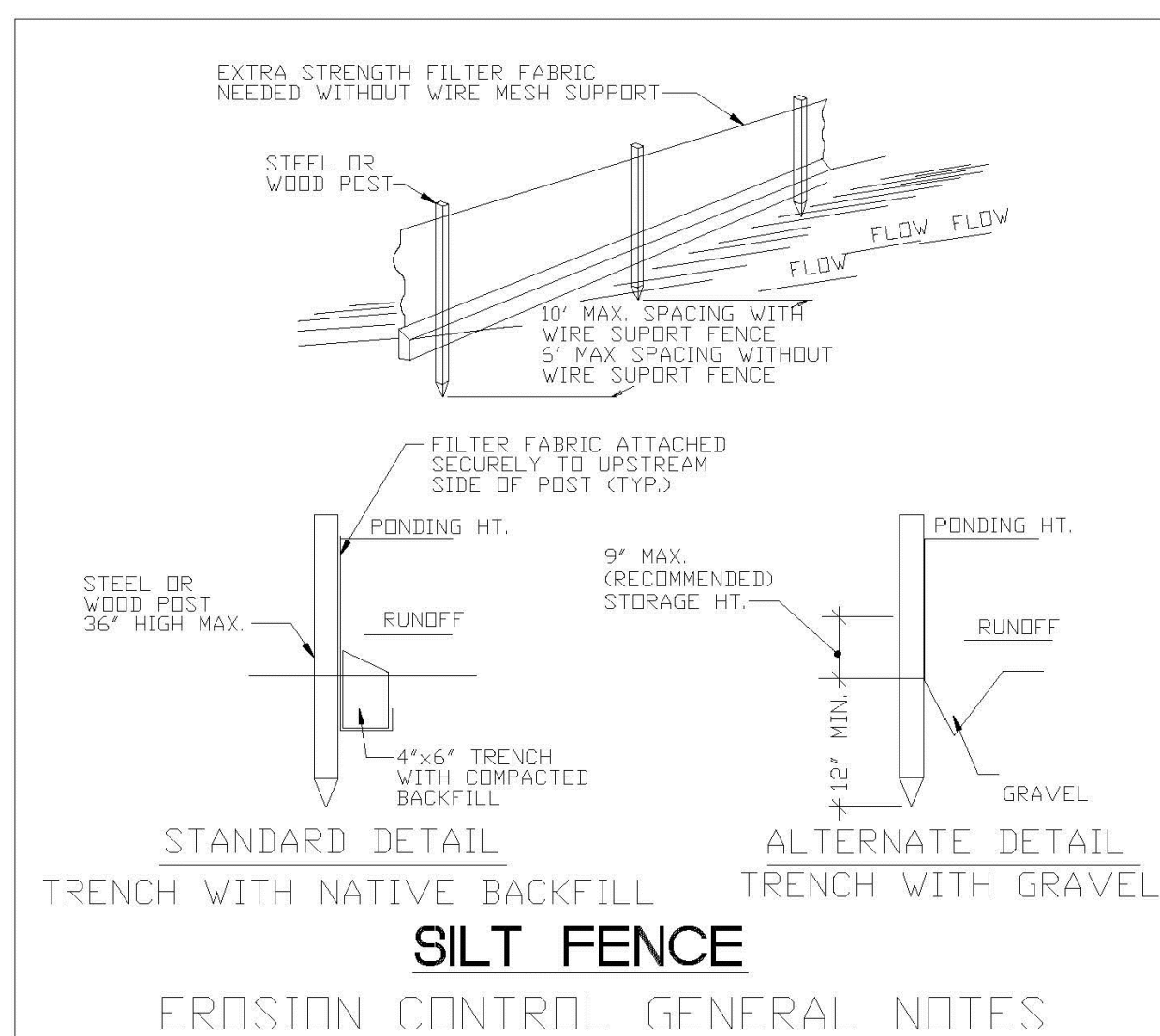
Signature must be verified on any electronic copies



- NOTES:
1. PLACE CURB TYPE SEDIMENT BARRIERS ON GENTLY SLOPING STREET SEGMENTS, WHERE WATER CAN POND AND ALLOW SEDIMENT TO SEPARATE FROM RUNOFF.
  2. SANDBAGS, OF EITHER BURLAP OR WOVEN GEOTEXTILE FABRIC, ARE FILLED WITH GRAVEL, LAYERED AND PACKED TIGHTLY.
  3. LEAVE ONE SANDBAG GAP IN THE TOP ROW TO PROVIDE A SPILLWAY FOR OVERFLOW.
  4. INSPECT BARRIERS AND REMOVE SEDIMENT AFTER EACH STORM EVENT. SEDIMENT AND GRAVEL MUST BE REMOVED FROM THE TRAVELED WAY IMMEDIATELY.

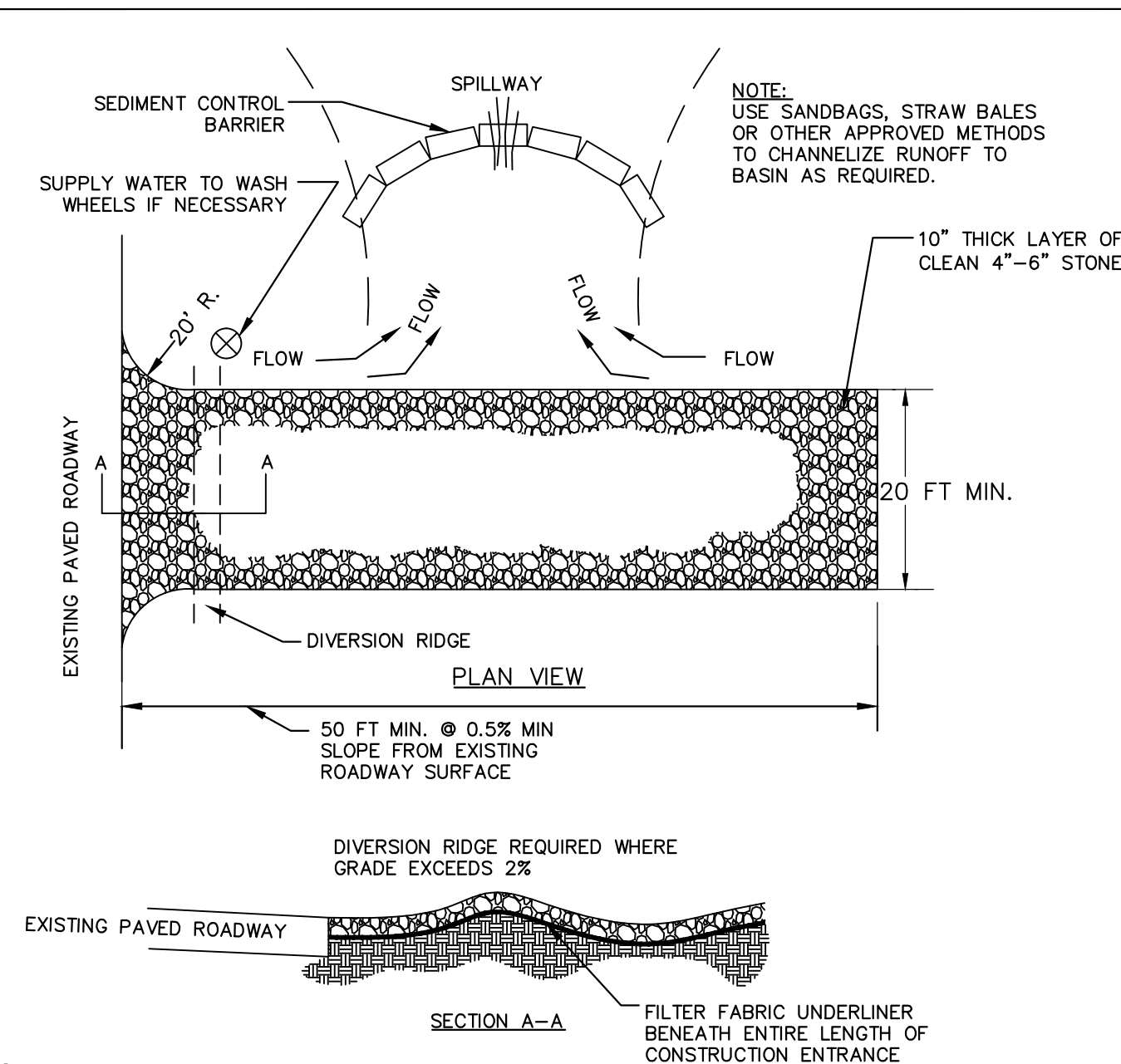
### CURB INLET SEDIMENT BARRIER

ENGINEERING STANDARDS 2022			
REVISIONS		ENGINEERING DIVISION CITY OF POMPANO BEACH	CURB INLET SEDIMENT BARRIER
BY	DATE		
SCALE: N.T.S.		DATE: MAY 2022	507-1
		DWG. NO.	



1. SILT FENCE AND TURBIDITY BARRIERS MUST REMAIN IN PLACE AND BE MAINTAINED AT ALL LOCATIONS SHOWN IN THE DRAWINGS UNTIL CONSTRUCTION IS COMPLETED AND SOILS ARE STABILIZED AND VEGETATION HAS BEEN.
2. CONTRACTOR SHALL SUBMIT SCHEDULE FOR THE INSTALLATION, INSPECTION AND MAINTENANCE THE EROSION CONTROLS FEATURES AS SHOWN IN THE DRAWINGS OR AS DIRECTED BY THE DESIGN ENGINEER. THE SCHEDULE SHALL SPECIFICALLY STATE SPECIFICALLY INDICATE THE SEQUENCE OF CLEARING, EARTH WORK OPERATION, AND WHEN THE EROSION CONTROL FEATURES WILL BE INSTALLED, INSPECTED, AND MAINTAINED. IT SHALL ALSO INCLUDE METHODS TO PREVENT POLLUTION OF STREAM, LAKES, TIDAL WATERS, CANALS, AND IMPUNDMENTS. ESTABLISHED.

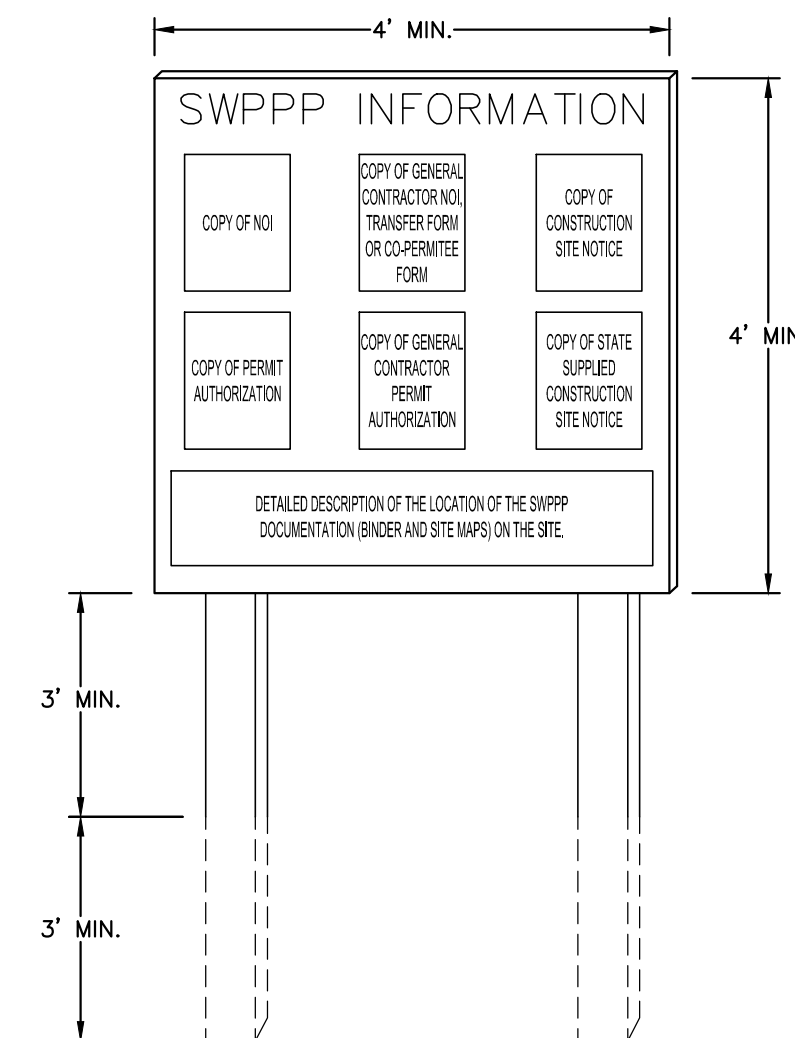
ENGINEERING STANDARDS 2022			
REVISIONS		ENGINEERING DIVISION CITY OF POMPANO BEACH	SILT FENCE
BY	DATE		
		SCALE: N.T.S.	DATE: MAY 2022 DWG. NO. 509-1



- NOTES:

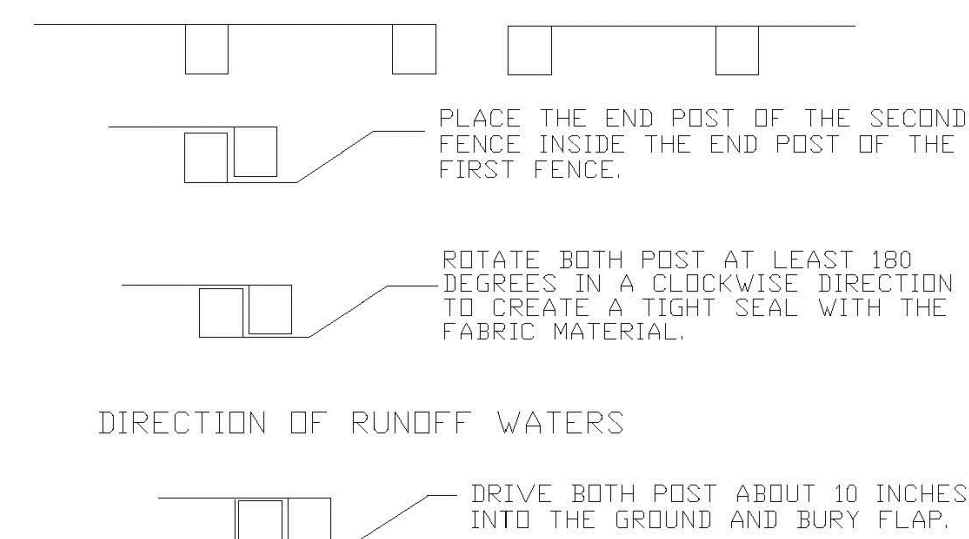
1. THE ENTRANCE SHALL BE MAINTAINED IN A CONDITION THAT WILL PREVENT TRACKING OR FLOWING OF SEDIMENT ONTO PUBLIC RIGHTS-OF-WAY. THIS MAY REQUIRE TOP DRESSING, REPAIR AND/OR CLEANOUT OF ANY MEASURES USED TO TRAP SEDIMENT.
2. WHEN NECESSARY, WHEELS SHALL BE CLEANED PRIOR TO ENTRANCE ONTO PUBLIC RIGHT-OF-WAY.
3. WHEN WASHING IS REQUIRED, IT SHALL BE DONE ON AN AREA STABILIZED WITH CRUSHED STONE THAT DRAINS INTO AN APPROVED SEDIMENT TRAP OR SEDIMENT BASIN.

**1 STABILIZED CONSTRUCTION ENTRANCE**  
N.T.S.



- NOTES:
  1. "SWPPP INFORMATION" MUST BE DISPLAYED PROMINENTLY ACROSS THE TOP OF THE SIGN, AS ABOVE.
  2. SIGN TO BE CONSTRUCTED OF A RIGID MATERIAL, SUCH AS PLYWOOD OR OUTDOOR GRADEABLE, SUCH THAT IT IS NOT DESTROYED IN A MANNER TO PROTECT DOCUMENTS FROM DAMAGE DUE TO WEATHER (WIND, SUN, MOISTURE, ETC.).
  3. SWPPP INFORMATION SIGN MUST BE LOCATED NEAR THE ENTRANCE/EXIT OF THE SITE, SUCH THAT IT IS ACCESSIBLE/VISIBLE BY THE GENERAL PUBLIC, BUT NOT OBSTRUCTING VIEWS AS TO CAUSE A SAFETY HAZARD.
  4. ALL POSTED DOCUMENTS MUST BE MAINTAINED IN A CLEARLY READABLE CONDITION AT ALL TIMES THROUGHOUT CONSTRUCTION AND UNTIL THE NOTICE-OF-TERMINATION (NOT) IS FILED FOR THE PERMIT.
  5. CONTRACTOR SHALL POST OTHER STORM WATER AND/OR EROSION AND SEDIMENT CONTROL RELATED SIGNS AS REQUIRED BY THE LOCAL AGENCY.
  6. SIGN SHALL BE LOCATED OUTSIDE OF PUBLIC RIGHT-OF-WAY AND EASEMENTS UNLESS APPROVED BY THE GOVERNING AGENCY.
  7. CONTRACTOR IS RESPONSIBLE FOR ENSURING COMPLIANCE OF THIS SWPPP INFORMATION SIGN.

**2 SWPP INFORMATION SIGN**  
N.T.S.



- NOTES:
1. INSPECT AND REPAIR FENCE AFTER EACH STORM EVENT AND REMOVE SEDIMENT WHEN NECESSARY.
  2. REMOVED SEDIMENT SHALL BE DEPOSITED TO AN AREA THAT WILL NOT CONTRIBUTE SEDIMENT OFF-SITE AND CAN BE PERMANENTLY STABILIZED.
  3. SILT FENCE SHALL BE PLACED ON SLOPE CONTOURS TO MAXIMIZE PONDING EFFICIENCY.

## ATTACHING TWO SILT FENCES

ENGINEERING STANDARDS 2022			
REVISIONS		ENGINEERING DIVISION CITY OF POMPANO BEACH	ATTACHING TWO SILT FENCES   DATE: MAY 2022 DWG. NO. 509-2
BY	DATE		
SCALE: N.T.S.			

**Kimley»»Horn**

© 2024 KIMLEY-HORN AND ASSOCIATES, INC.  
8201 PETERS ROAD, SUITE 2200, PLANTATION, FL 33324  
PHONE: 954-535-5100 FAX: 954-739-2247  
WWW.KIMLEY-HORN.COM REGISTRY NO: 696

LICENSED PROFESSIONAL

TERESA VILLALON  
CAMACHO, P.E.  
FL LICENSE NUMBER  
94893

KHA PROJECT

040985115  
DATE

JULY 2025

DESIGNED BY

DRAWN BY

HECKED BY \_\_\_\_\_

DATE: \_\_\_\_\_

## DEMOLITION AND EROSION CONTROL DETAILS

ANNIE ADDERLY GILLIS  
PARKING LOT  
PREPARED FOR  
CITY OF POMPANO BEACH

CITY OF POMPANO BEACH  
FL

SHEET NUMBER  
C1.10

2000033